

CERTIFIED LAND CORNER RECORDATION

DESCRIPTION OF CORNER EVIDENCE FOUND, AND ORIGINAL RECORD (If known)

LOCATION Found G.L.O. record monument, leaning, 2' below road surface. Position re-established from Mile Post 38. (See sketch on reverse for details)

CC S. 2
S.11 G.L.O. record - Set an iron post 3 ft. long, 2 3/4 ins. diam., 26 ins. in the ground, surmounted by brass cap, marked T. 18 N., R. 60 W., S. 2 on N. W.; S. 11 on S. W.; WYO on W. and NEB on E., May 30, 1908.

T.18N.,R.60W.
6th P.M.

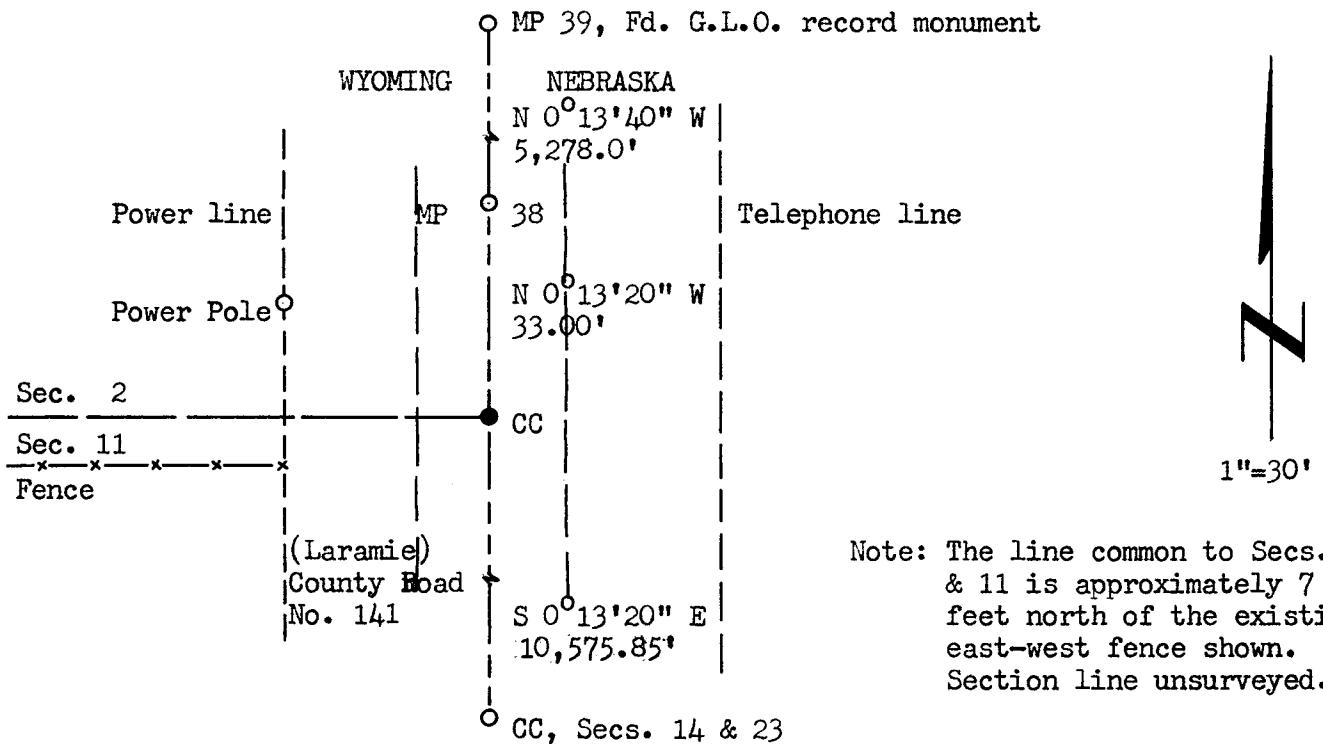
DESCRIPTION OF MONUMENT AND ACCESSORIES ESTABLISHED TO PERPETUATE THE ORIGINAL LOCATION OF THIS CORNER:

At the corner: Reset G.L.O. monument with brass cap 10" below road surface. Restamped "NEB" on east and stamped "WYO LS 519" on south of brass cap.

Accessories: At Mile Post 38; Set a 1 1/2" dia. x 30" long iron pipe (concrete-filled), 9" below road surface on top of granite monument.

SKETCH, WITH COURSE AND DISTANCE TO ADJACENT CORNER IF DETERMINED IN THIS SURVEY.
(May Sketch or Paste Reproduction on Reverse Side.)

Additional Sketch on Reverse



I, R.L. Hudson certify that I have carefully performed ~~or reviewed~~ the work done on the diagrammed corner as reported on this recordation form and approve the same.

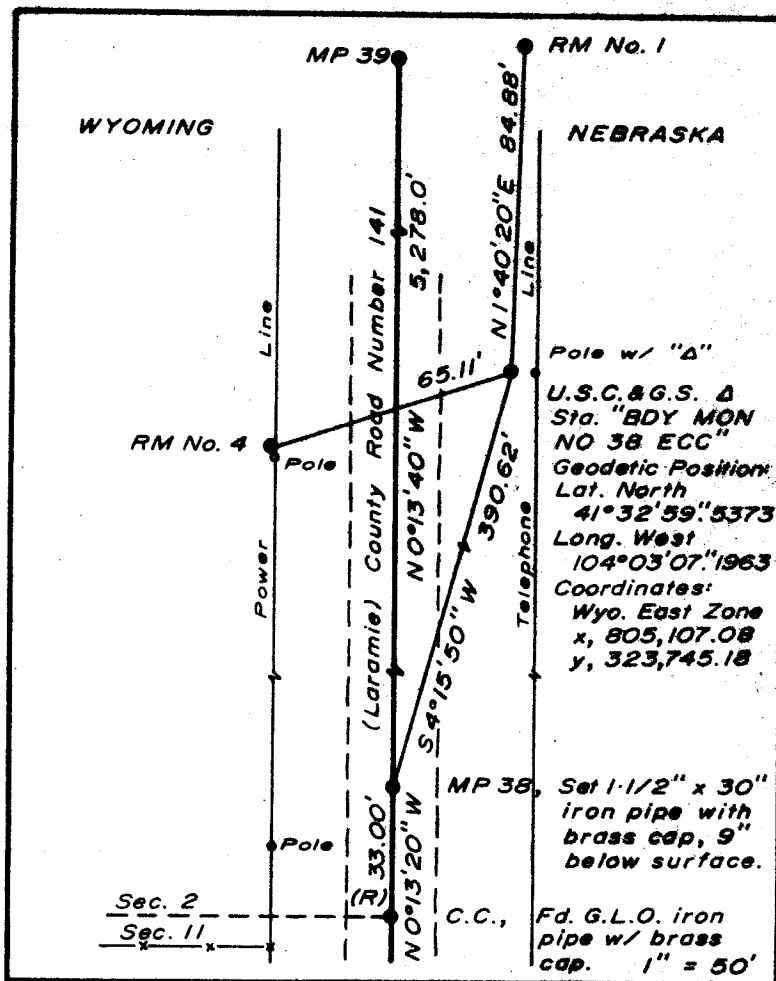
R.L. Hudson Wyoming L.S. No. 519
Signature of Surveyor Registration No.

STATE OF WYOMING,
Office of Clerk and Recorder,
County of Laramie

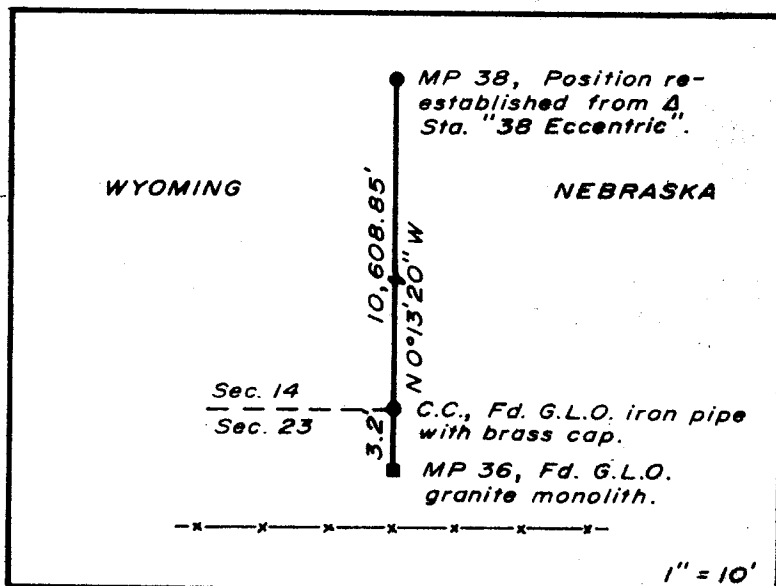
This "corner record" was filed for record on the 30th day of October, 1972, was noted on the cross-index plat and is assigned page No. 18-60, in book No. ONE.

[Signature]
County Official

Cross Index No. _____	T. _____	R. _____	Mer. _____
_____	T. _____	R. _____	Mer. _____
_____	T. _____	R. _____	Mer. _____
_____	T. _____	R. _____	Mer. _____
_____	T. _____	R. _____	Mer. _____
_____	T. _____	R. _____	Mer. _____
_____	T. _____	R. _____	Mer. _____



INSET "A"



INSET "B"

269779

The State of Wyoming } SS
County of Laramie

This instrument was filed for record

at 2:01 o'clock P.M. on

28th day of October

A. D. 1922 and duly recorded

Book _____ on page _____

John B. Hillman

County Clerk & Ex-Officio Register

By _____

